

bernmatic® BTRV Belt Tracking Roller Precision Right Down the Line

THE ALL NEW bernmatic® BTRV BELT TRACKING ROLLER FROM BERNDORF BAND ENGINEERING

Perfect belt running – for your perfect product quality - precise belt tracking thanks to continuous belt monitoring

- Berndorf Band Engineering's ability to create computer simulation of the tracking of any steel belt application is used to make the bernmatic® system very belt life time saving and reliable.
- An inductive sensor is checking belt speed and optical or mechanical belt edge sensors check the actual belt edge position.

ADVANTAGES AND STRENGTHS

- **Easy integration** of precise belt tracking **into existing systems**
- **Compact design** for easy installation and start-up
- **Use of world leading automation components (PLC) for control system.** This ensures that the bernmatic® system can be linked to the superordinate control and visualization system of your plant. Recorded data and messages are not only displayed on the integrated monitor, but can also be integrated into your system. **Spare parts are available** for a long period of time, and can also be obtained from the manufacturer through their world-wide distribution network.
- The **touch panel** controls the functions and checks the tracking history of the belt.
- **Control** of belt tracking **independently of speed**
- **Installation** and commissioning can be carried out on site **by your own staff.**



Installation of bernmatic® BTRV Belt Tracking Roller



Belt edge sensor



Graphic touch panel

Options / Special Executions

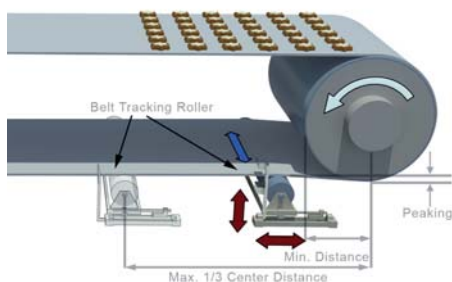
EXECUTION	SUPPORT ROLLER
Vertical adjustment	Steel, zinc or plastic coated, special coatings upon request

SENSORS
Belt edge contacting sensor: for dust-contaminated environments
Non contacting optical belt edge sensor: for little dust-contaminated environments
Non contacting optical belt edge sensor with compressed air flushing: for dust-contaminated environments

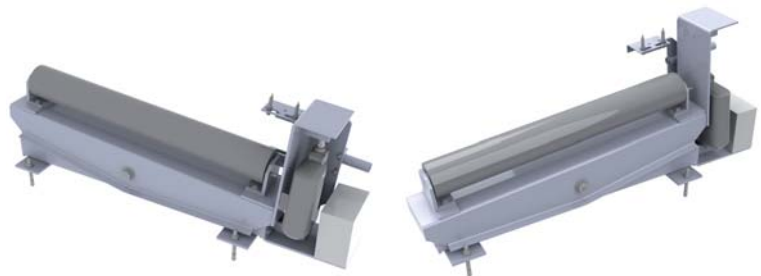
AUTOMATION SYSTEM
Siemens S7 Allen Bradley

INTERFACES	REMOTE MAINTENANCE
Profibus Profinet Ethernet further interfaces upon request	Phone, Internet (VPN)

The bermatic® belt tracking roller is available **for belt widths up to 5 metres** and comes up with instructions for installation, start-up and maintenance.



Possible Locations for Installation of bermatic® Belt Tracking Roller



bermatic® belt tracking roller - vertical adjustment

Further options / executions upon request

Berndorf Band Engineering GmbH
 Leobersdorfer Straße 26
 A-2560 Berndorf, Austria

Tel (+43)2672/800-223
 Fax (+43)2672/88760

engineering@berndorf.co.at
 www.berndorf-engineering.com